

**Rolls Royce Phantom II
1932 Drop Head Sedan Coupé
1:8 Scale Pocher K72**



October 7, 2004

This shot shows the articulated driving lights and the wire conduit used to hide the electrical cable powering the lights.

The chrome plate finish over the brass light fixtures really adds a nice visual contrast to the polished stainless steel of the conduit.

The cable guides started life as supports for the Rolls-Royce leaf springs. A little cutting and a little sanding and they become very decent guide rings.

**Rolls Royce Phantom II
1932 Drop Head Sedan Coupé
1:8 Scale Pocher K72**



November 3, 2004

Well – the day has finally arrived. Nine days short of two full years after beginning this project, The Satin Doll is complete.

Sporting a new trunk and chrome end plates in each door jam, the 1931 Rolls-Royce Phantom II Continental Fixed Head Coupe is ready for her official debut.

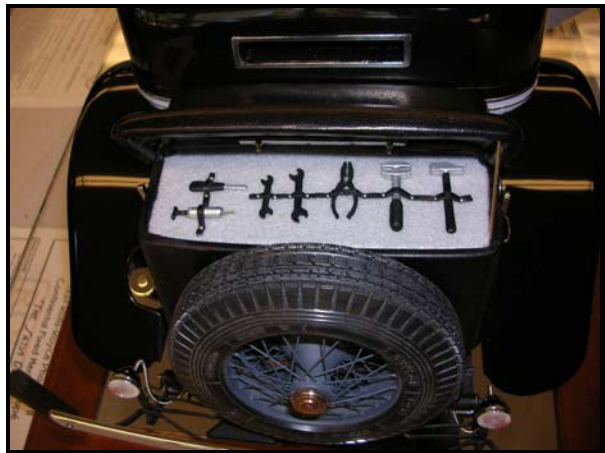
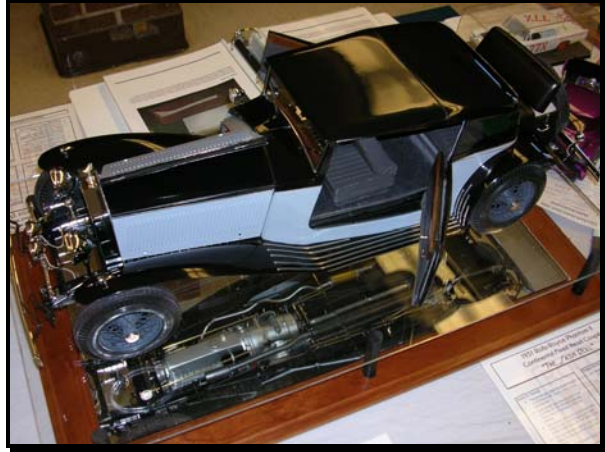
**Rolls Royce Phantom II
1932 Drop Head Sedan Coupé
1:8 Scale Pocher K72**



November 6, 2004

In her first public showing after completion, The Satin Doll comes out at the Cleveland Model Show

**Rolls Royce Phantom II
1932 Drop Head Sedan Coupé
1:8 Scale Pocher K72**



November 6, 2004

She's well received in Cleveland. The display stand was made last night.

The tool kit in the trunk was a last minute addition that is really one of my favorite parts of the car.
